

How To – Install and Configure Cyberoam General Authentication Client

Scenario

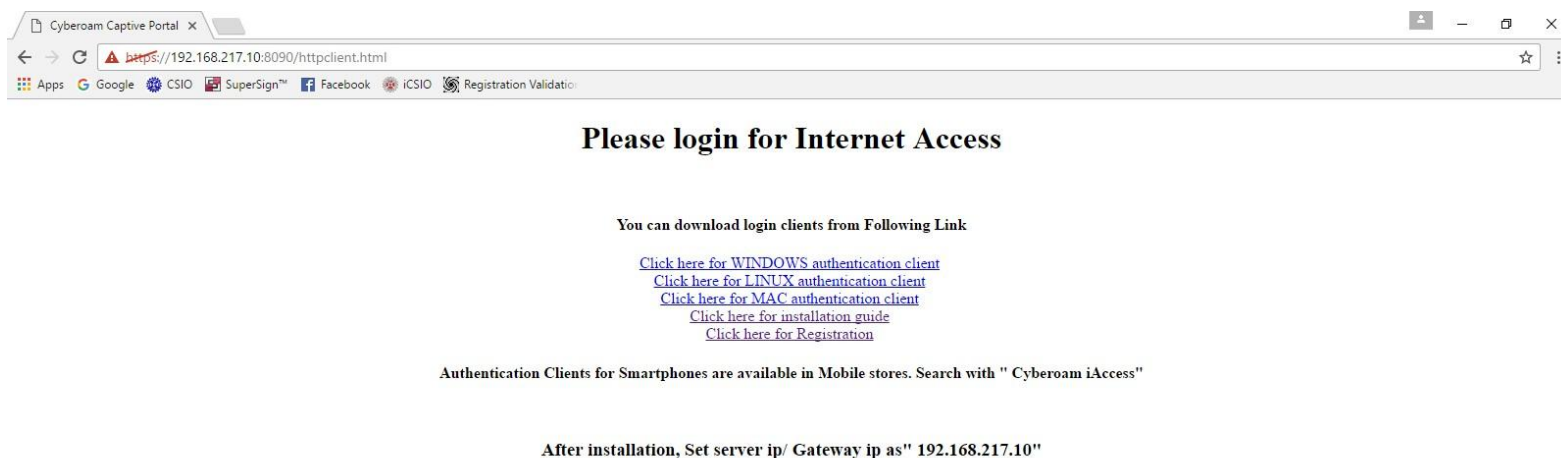
Install and configure General Authentication Client in client machine .

Configuration

You can install and configure client by following the steps given below.

Step 1: Download General Authentication Client

Browse to 192.168.217.10:8090 and download the general authentication client for your Machine.




The installer **Cyberoam General Authentication Client** is downloaded. Save it on the client machine.

Step 2: Install Client on client machine

Run the Setup and follow on screen instructions to install the client on Client machine.

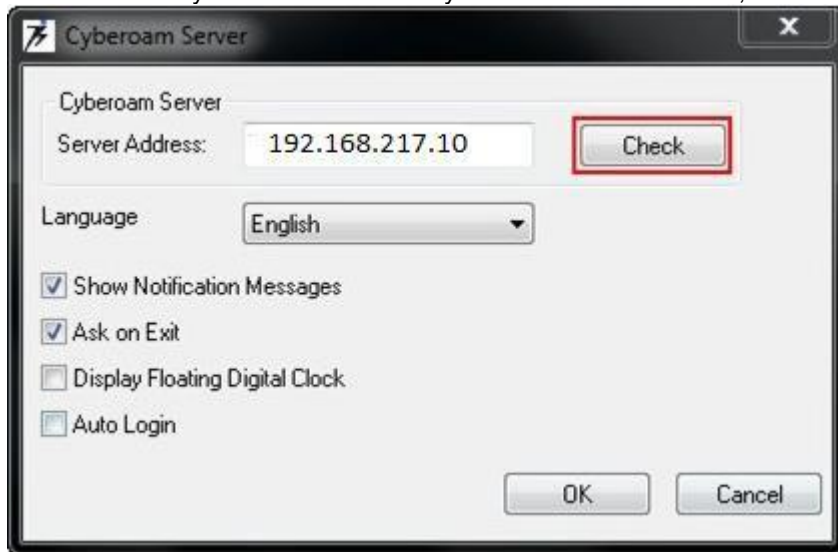
Step 3: Configure Server Details

Once client is installed on the machine, click the desktop icon  to configure Cyberoam Server details. Set LAN IP Address of your Cyberoam as **Cyberoam Server Address** and click **Check** to check connectivity with server.

Note:

For Administrators: You can view the Cyberoam IP Addresses on the Cyberoam Web Admin Console from **Network > Interface > Interface**.

For Network Users: If you do not know the Cyberoam LAN IP Address, contact Administrator.




Here, as an example, we have set Cyberoam Server Address as 192.168.217.10. Specify the IP Address you have set on the LAN Interface of your Cyberoam in this field.

Additionally you can enable:

- **Show Notification Messages** to view pop-ups at each login and logout.
- **Ask on Exit** to display warning message before logging out.
- **Display Floating Digital Clock** to display a floating digital clock on the desktop when user is logged in.
- **Auto Login** to login user to Cyberoam directly at machine startup.

Click **OK** to save the configuration.

Step 4: Login to Cyberoam

Login to Cyberoam using General Authentication Client by double-clicking the client  icon on the desktop. Enter user credentials and click **Login**.



Note:

From version 2.1.2.7 onwards, CGAC supports Multiple Server Mode in which it can authenticate to multiple Cyberoam Appliances simultaneously. This is especially useful in a network with multiple Cyberoam Appliances placed at more than one gateway. The routing on the network switch is configured such that different type of traffic is routed through a different gateway.

In Multiple Server Mode, the CGAC can be configured to authenticate with a maximum of Four (4) Cyberoam Appliances.

To enable Multiple Server Mode, right-click the CGAC icon on the task bar, then click Advanced and select Multiple Server Mode.

When Multiple Server Mode is selected:

- CGAC allows you to specify multiple Cyberoam Server Addresses from Preferences window.
- On login, IP Address wise success or failure messages are displayed.
- You can access My Account of each Cyberoam Server from the LoginPage.
- You can check the connection status of each Cyberoam from the Login Status Page. You can also sign out from one or more Cyberoam Servers while continuing your session with others.